

PEDIATRICS®

OFFICIAL JOURNAL OF THE AMERICAN ACADEMY OF PEDIATRICS

Lead Exposure, IQ, and Behavior in Urban 5- to 7-Year-Olds: Does Lead Affect Behavior Only by Lowering IQ?

Aimin Chen, Bo Cai, Kim N. Dietrich, Jerilynn Radcliffe and Walter J. Rogan

Pediatrics 2007;119:e650-e658

DOI: 10.1542/peds.2006-1973

The online version of this article, along with updated information and services, is located on the World Wide Web at:

<http://www.pediatrics.org/cgi/content/full/119/3/e650>

PEDIATRICS is the official journal of the American Academy of Pediatrics. A monthly publication, it has been published continuously since 1948. PEDIATRICS is owned, published, and trademarked by the American Academy of Pediatrics, 141 Northwest Point Boulevard, Elk Grove Village, Illinois, 60007. Copyright © 2007 by the American Academy of Pediatrics. All rights reserved. Print ISSN: 0031-4005. Online ISSN: 1098-4275.

American Academy of Pediatrics

DEDICATED TO THE HEALTH OF ALL CHILDREN™



Lead Exposure, IQ, and Behavior in Urban 5- to 7-Year-Olds: Does Lead Affect Behavior Only by Lowering IQ?

Aimin Chen, MD, PhD^a, Bo Cai, PhD^b, Kim N. Dietrich, PhD^c, Jerilynn Radcliffe, PhD^d, Walter J. Rogan, MD^a

^aEpidemiology Branch and ^bBiostatistics Branch, National Institute of Environmental Health Sciences, National Institutes of Health, Department of Health and Human Services, Research Triangle Park, North Carolina; ^cDepartment of Environmental Health, University of Cincinnati, Cincinnati, Ohio; ^dDepartment of Psychology, Children's Hospital of Philadelphia and University of Pennsylvania School of Medicine, Philadelphia, Pennsylvania

The authors have indicated they have no financial relationships relevant to this article to disclose.

ABSTRACT

BACKGROUND. Lead exposure in childhood lowers IQ scores, but its effect on children's behavior is less clear. Because IQ, per se, affects behavior, measuring the direct effect of lead requires measuring and then adjusting for IQ. In addition, either peak blood lead concentration, usually at 2 years old, or the lower blood lead level measured at school age may be the most relevant. Few studies have all of this information.

OBJECTIVES. The purpose of this work was to differentiate the direct effect of lead on behavior and the indirect effect through IQ and to examine the strength of the association for peak and concurrent blood lead concentration.

METHODS. Data come from a clinical trial of the chelating drug succimer to prevent cognitive impairment in 780 urban 12- to 33-month-olds with blood lead concentrations of 20 to 44 $\mu\text{g}/\text{dL}$. The children were followed from ages 2 to 7 years. The trial data were analyzed as a prospective observational study.

RESULTS. Blood lead concentration at 2 years old was not associated with Conners' Parent Rating Scale-Revised scores at 5 years of age or Behavioral Assessment Systems for Children scores at 7 years of age. Blood lead level at 7 years of age had direct effects on the Behavioral Assessment Systems for Children behavioral symptoms index, externalizing, and school problems at age 7.

CONCLUSIONS. Concurrent blood lead concentration was associated with externalizing and school problems scales at 7 years of age, and the effect was not entirely mediated through the effect of lead on IQ.

www.pediatrics.org/cgi/doi/10.1542/peds.2006-1973

doi:10.1542/peds.2006-1973

Dr Chen's current affiliation is Department of Preventive Medicine, Creighton University School of Medicine, Omaha, NE.

Some of this work was presented at the annual meeting of the Pediatric Academic Societies; April 29–May 2, 2006; San Francisco, CA; and at the Second North American Congress of Epidemiology; June 21–24, 2006; Seattle, WA.

Key Words

lead, cognition, behavior, child, longitudinal studies

Abbreviations

TLC—Treatment of Lead-Exposed Children Study

CPRS-R—Conners' Parent Rating Scale-Revised

ADHD—attention-deficit/hyperactivity disorder

BASC—Behavioral Assessment Systems for Children

PRS—parent rating scale

TRS—teacher rating scale

Accepted for publication Sep 22, 2006

Address correspondence to Walter J. Rogan, MD, Epidemiology Branch, National Institute on Environmental Health Sciences, MD A3-05, PO Box 12233, Research Triangle Park, NC 27709. E-mail: rogan@niehs.nih.gov

PEDIATRICS (ISSN Numbers: Print, 0031-4005; Online, 1098-4275). Copyright © 2007 by the American Academy of Pediatrics

EVEN SMALL AMOUNTS of lead exposure in childhood seem to lower scores on IQ tests. Multiple cohort and cross-sectional studies give similar estimates of the size of the effect.¹⁻⁵ Although the Centers for Disease Control and Prevention had set a “level of concern” at 10 $\mu\text{g}/\text{dL}$ blood lead concentration, a threshold below which lead does not affect IQ has not been determined, and recent studies have extended the relation to <10 $\mu\text{g}/\text{dL}$.⁶⁻⁸ Whether lead exposure produces other psychological or behavioral damage in children is less well studied. These other dimensions are important, because they may affect learning and school performance even in children with higher IQ. Older reports suggested associations between lead exposure and poorer classroom performance,⁹ impaired educational attainment,^{10,11} inattention and hyperactivity,^{12,13} juvenile delinquency,¹⁴ motor development,¹⁵⁻¹⁷ or behavioral problems.¹⁸⁻²⁵ Lead was associated with externalizing (ie, aggression) and internalizing (ie, worry) problems in several studies using behavioral measures such as the Child Behavior Checklist.^{19,20,25}

Studying behavior in the presence of an effect of lead on IQ presents both practical and inferential problems. First, understanding how lead exposure might affect the child’s psychological and emotional function at school and at home is approached both by questioning the parent and teacher about the child’s behavior and by testing specific relevant functional domains of mood and behavior. However, the tests may not isolate the specific domain of interest from IQ and in practice are often significantly correlated with IQ. Moreover, IQ may be on the pathway leading to behavioral problems.²⁶ So, without appropriate control for IQ, the nature of the lead effect on behavior cannot be distinguished.^{25,27} Second, exposure to lead may continue from the fetal period through childhood. Although children’s lead concentrations correlate over time, the trajectories vary enough that a single measurement of blood concentration is insufficient to characterize an individual child’s exposure over time. In particular, we need to be able to distinguish whether peak blood lead level, which occurs at ~ 2 years old in the United States, or concurrent blood lead level, which is usually lower by school age when IQ and behavioral testing is done, accounts for any effect on behavior.

In the Treatment of Lead-Exposed Children (TLC) Study, we measured blood lead concentration periodically from 2 to 7 years old and have IQ, neuropsychological, and behavioral test scores at ages 5 and 7 years. Thus, we can analyze the association between lead and behavior while taking IQ into account and examine the relative strength of the association between blood lead concentrations at different ages, IQ, and behavioral test scores.

SUBJECTS AND METHODS

The TLC study was a multicenter, randomized, placebo-controlled clinical trial of 780 children 12 to 33 months old (mean: 2 years; SD: 0.5 years), who had blood lead concentrations of 20 to 44 $\mu\text{g}/\text{dL}$, to investigate the effects of succimer, an oral chelating agent, on cognitive, behavioral, and physical development.²⁸ The study was approved by the institutional review boards at the clinical centers, the Harvard School of Public Health, the Centers for Disease Control and Prevention, and the National Institute of Environmental Health Sciences. The parent(s) of all of the children provided written informed consent. Although ≤ 3 courses of treatment with succimer was effective in lowering blood lead concentrations for ~ 9 to 10 months, it did not improve scores on tests of cognition, behavior, or neuropsychological function in children at 36 months²⁹ or 60 months of follow-up³⁰ as compared with placebo. Because the succimer treatment did not affect lead concentrations at baseline and ages 5 and 7 years, nor did it affect IQ and behavior scores at ages 5 and 7 years, the succimer and placebo study groups can be combined to study prospectively the effect of blood lead concentrations on the scores of neuropsychological and behavioral tests.

Blood Lead Concentrations

Venous blood was collected with lead-free containers twice before random assignment and on days 7, 28, and 42 after the beginning of each course of treatment. After treatment ended, blood lead concentrations were measured every 3 to 4 months. We use the second blood sample before random assignment ($n = 780$) as baseline (at age 2), the blood sample at 36 months of follow-up ($n = 731$) as the age 5 sample, and the last blood sample at 60 months of follow-up ($n = 623$) as the age 7 sample. The blood lead concentrations were measured at the Nutritional Biochemistry Branch of the Centers for Disease Control and Prevention by atomic absorption spectrometry based on the methods described by Miller et al.³¹ For blood lead concentrations at 7 years, 1 child who had a very high blood lead concentration of 51 $\mu\text{g}/\text{dL}$ (~ 10 SDs from the mean) was excluded, leaving 622 for use in this analysis.

Cognitive Tests

At 5 years old, the child’s IQ was determined with the Wechsler Preschool and Primary Scales of Intelligence-Revised³²; at 7 years old, child IQ was tested with the Wechsler Intelligence Scale for Children-III.³³ At 1 of the visits between enrollment and the 36-month follow-up, the caregiver’s IQ (the mother for 88% of children, the father for 4%, and another caregiver for 8%) was measured with the 2 subtest versions of the Wechsler Adult Intelligence Scale-Revised.^{34,35}

Behavioral Test Batteries

At 5 years of age, the Conners' Parent Rating Scale-Revised (CPRS-R)³⁶ was administered. The CPRS-R is a 27-item scale and yields an oppositional index, hyperactivity index, and attention-deficit/hyperactivity disorder (ADHD) index; the average of these 3 indices yields what we called the behavioral index.

At 7 years old, the children were tested with the Behavior Assessment System for Children (BASC) teacher rating scale (TRS) and BASC parent rating scale (PRS).³⁷ The BASC for parents yields 4 composite scales: adaptive skills, behavioral symptoms index, externalizing problems, and internalizing problems. The BASC for teachers yields those 4 scales plus a school problems scale. Both CPRS-R and BASC yield T scores that have a mean of 50 and an SD of 10 in the general population. Higher CPRS-R and BASC scores generally indicated worse behavioral problems, except for the BASC adaptive skills scale, where higher scores were optimal.

Statistical Analysis

We examined the lead and behavioral associations while controlling for the lead effect on IQ. First we did a correlation analysis of behavior scores and concurrent IQ (ie, behavior at age 5 and IQ at age 5). Then we examined the lead and behavior associations using scatter plot and cubic smoothing splines (which provides a fitted curve constructed by piecewise polynomials) with S-PLUS software (Insightful Corp, Seattle, WA). Because spline regressions showed an approximately linear relation, we used linear models for examining the lead effect. Blood lead concentrations in TLC children were part of the eligibility criteria and, thus, have a restricted spread. This allows us to use the original (ie, untransformed) values of blood lead concentrations, facilitating the interpretation of the models. Based on the literature and our previous work with the data,^{19,24,25,38,39} a priori covariates include clinic center (Baltimore, MD; Newark, NJ; Philadelphia, PA; and Cincinnati, OH), race (black, white, and others), gender (male or female), language (English or Spanish), parent's education (<12 years, 12 years, >12 years), parent's employment (neither working or either working), single parent (yes or no), age at blood lead concentration test, and caregiver's IQ. Treatment, per se, was not associated with behavior scores, and additional adjustment for treatment group did not markedly change the results and, thus, was not included in subsequent analyses.

We simultaneously estimated the strengths of lead effects on behavior, both the direct and indirect (through IQ; Fig 1), by using path analysis, a special case of structural equation modeling, which tests the fit of the correlation matrix against ≥ 2 causal models. In path analysis, a regression is done for each variable in the model (in our case, the behavioral test scores) as dependent on others that may be causal. When the model has

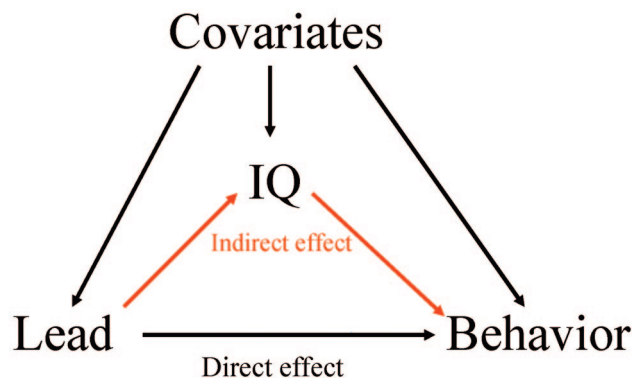


FIGURE 1
Path diagram of direct and indirect effects of blood lead level on behavior.

≥ 2 causal variables (in our case, lead and IQ plus covariates), path coefficients are partial regression coefficients that measure the extent of effect of 1 variable on another in the path model controlling for other previous variables. Path coefficients can be used to decompose associations into direct and indirect effects. A more detailed description of this procedure can be found in several references.^{40,41} The path analysis was tested via the LISREL 8 program⁴² using a maximum likelihood structural equation model, which provides unstandardized regression coefficients and their SEs for both direct and indirect effects.⁴³ The total effect of lead on behavior would be the sum of the direct and indirect effects.

Blood lead concentrations in the same child are correlated, and multiple measures in 1 model are collinear and the coefficients are difficult to interpret. We, thus, constructed separate models for the different blood lead concentrations, either peak (at 2 years old) or concurrent with behavioral and IQ testing (5 or 7 years). All of the tests were 2-sided. Because of the difference in the number of children tested for each follow-up measurement, the sample sizes in the various regression models differ slightly.

For BASC scores at 7 years, we also did logistic regression on the percentage of children with BASC problem scores ≥ 60 , including those at risk (score: 60–69) and with clinical behavioral problems (score ≥ 70), by concurrent blood lead concentration. Mplus software was used to calculate the direct and indirect effect of lead in the logistic models.⁴⁴

RESULTS

Four centers were involved in the recruitment, treatment, and follow-up of a total of 780 children in the TLC study: Baltimore ($n = 213$), Newark ($n = 208$), Philadelphia ($n = 165$), and Cincinnati ($n = 194$). A total of 396 children were randomly assigned to receive succimer and 384 to receive placebo. There were no differences between treatment and placebo groups in age, gender, race, and socioeconomic status (parents' educa-

tion, employment, income, and receiving public assistance) at recruitment. Overall, the children were mostly black (77%), spoke English (95%), with a single parent (72%), and with parent(s) receiving public assistance (97%). Girls accounted for 44% of children, 40% of children had parents with <12 years of education, and 58% of children had neither parent employed.

Blood Lead Concentrations

At baseline, the mean blood lead concentration was 26 $\mu\text{g}/\text{dL}$. It declined to 12 $\mu\text{g}/\text{dL}$ (range: 2–35 $\mu\text{g}/\text{dL}$) at 36 months of follow-up and to 8 $\mu\text{g}/\text{dL}$ (range: 0–26 $\mu\text{g}/\text{dL}$) at 60 months of follow-up (Table 1). There were no differences in blood lead concentrations between succimer and placebo groups at these 3 age points (mean \pm SD age: 2.0 \pm 0.5, 5.0 \pm 0.5, and 7.0 \pm 0.2 years, respectively).

Cognitive Tests

The cognitive scores (mean \pm SD) in TLC children at baseline, age 5, and age 7 are shown in Table 1. Caregiver's IQ of these children had a mean of 80 and an SD of 11. Again, these cognitive scores of both children and caregivers did not differ by treatment group.

Behavioral Tests

The behavioral test scores (mean \pm SD) at 5 and 7 years are shown in Table 1. Also shown are the correlation

coefficients of these test scores with IQ and with blood lead concentration measured at the same age.

Lead and Behavior Association

We first plotted concurrent blood lead concentration and behavior scores and did spline regression. As examples, results of CPRS-R (at age 5) and teacher-rated BASC (at age 7) are shown in Figs 2 and 3. Behavioral problems tend to increase with increasing blood lead concentration at both ages 5 and 7 in the unadjusted data, but the estimates of CPRS-R at age 5 and of BASC internalizing problems (both teacher and parent rated) at age 7 were not statistically significant. In the path analysis for the CPRS-R, there were no statistically significant direct effects of blood lead level at age 2 or age 5; indirect effects were small and not consistent (Table 2). At age 7, there were no statistically significant direct or indirect effects of blood lead concentration at age 2 (data not shown). Blood lead concentration at age 7 had a statistically significant direct effect on BASC-TRS behavioral symptoms index, externalizing problems, and school problems and BASC-PRS externalizing problems (Figs 4 and 5). There were indirect effects of blood lead concentration at age 7 on all of the measurements except BASC-TRS externalizing problems and BASC-PRS internalizing problems. In the logistic regression analysis examining those at risk of or having clinically significant behavior problems, a 10 $\mu\text{g}/\text{dL}$ elevation in 7-year lead was asso-

TABLE 1 Mean and SD of Blood Lead Concentrations, IQ, and Non-IQ Outcomes and the Correlation Coefficients Between IQ and Blood Lead Concentrations and Non-IQ Outcomes at Specific Age in TLC Children

Age, y	Variables	n	Mean \pm SD	Correlation With Concurrent IQ ^a	Correlation With Concurrent Lead ^b
2	Blood lead concentration, $\mu\text{g}/\text{dL}$	780	26.2 \pm 5.1		
5	Blood lead concentration, $\mu\text{g}/\text{dL}$	731	12.0 \pm 5.2	−0.20	NA
	IQ	727	80.6 \pm 13.3	NA	−0.20
	CPRS-R				
	Oppositional index	721	57.6 \pm 13.9	−0.14	0.03
	Hyperactivity index	721	63.6 \pm 13.7	−0.14	0.06
	ADHD index	721	59.9 \pm 12.8	−0.25	0.06
	Behavioral index	721	60.4 \pm 12.0	−0.20	0.05
7	Blood lead concentration, $\mu\text{g}/\text{dL}$	622	8.0 \pm 4.0	−0.23	NA
	IQ	643	86.7 \pm 13.3	NA	−0.23
	BASC-TRS				
	Adaptive skills	530	46.3 \pm 9.4	0.39	−0.13
	Behavioral symptoms index	540	54.5 \pm 11.5	−0.28	0.18
	Externalizing problems	539	55.2 \pm 13.0	−0.18	0.18
	Internalizing problems	541	52.4 \pm 10.1	−0.17	0.08
	School problems	541	56.2 \pm 12.2	−0.47	0.23
	BASC-PRS				
	Adaptive skills	647	45.7 \pm 11.0	0.33	−0.11
	Behavioral symptoms index	647	55.6 \pm 14.9	−0.21	0.13
	Externalizing problems	647	58.0 \pm 15.4	−0.23	0.18
	Internalizing problems	647	50.1 \pm 12.1	−0.06	0.06

NA indicates not applicable.

^a All $P < .05$ except for parent-rated internalizing problems at age 7.

^b All $P < .05$ except for CPRS-R scores and BASC internalizing problems (both teacher and parent rated).

FIGURE 2

Scatter plot of concurrent blood lead concentrations and CPRS-R test scores at age 5 and smoothed spline regression curves. OPPOS, HYPER, ADHD, and BEHAVIDX denote CPRS-R oppositional index, hyperactivity index, ADHD index, and behavioral index, respectively.

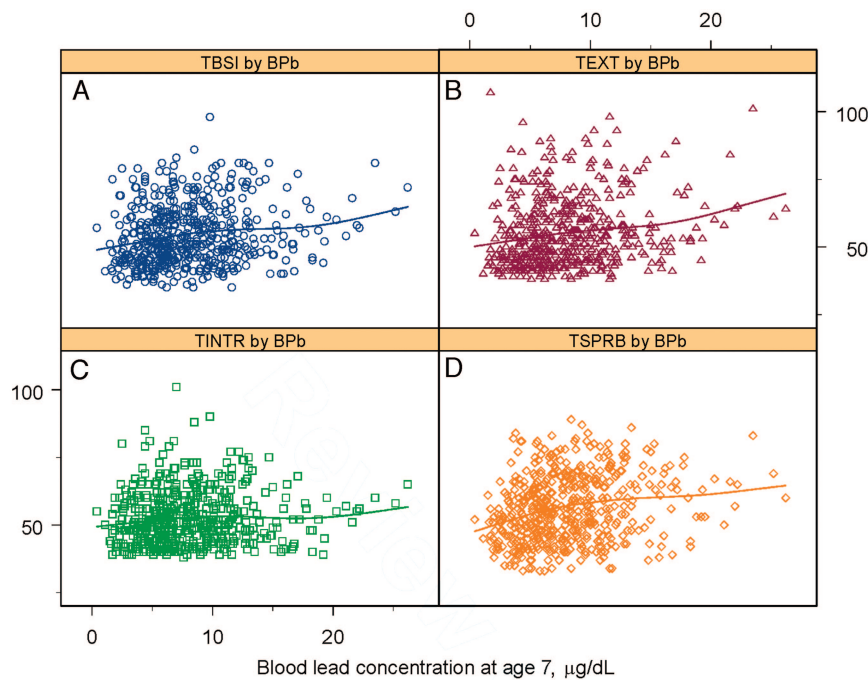
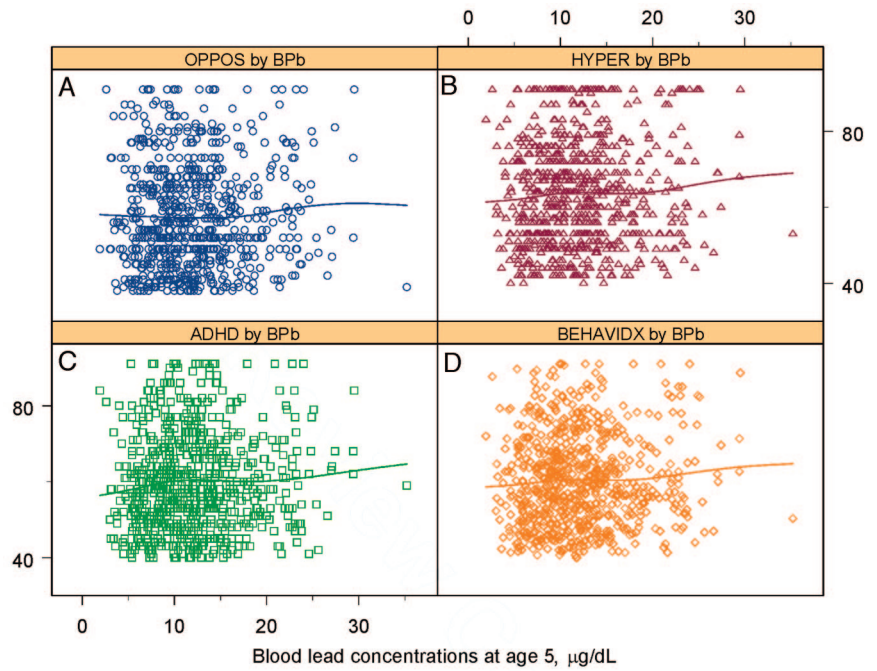


FIGURE 3

Scatter plot of concurrent blood lead concentrations and teacher-rated BASC test scores at age 7 and smoothed spline regression curves. TBSI, TEXT, TINTR, and TSPRB denote teacher-rated BASC score of behavioral symptoms index, externalizing problems, internalizing problems, and school problems, respectively.

ciated with increased risk in teacher-rated externalizing and school problems and parent-rated behavioral symptoms index by direct effect (Table 3).

DISCUSSION

In data from a clinical trial of lead-exposed children, we found that lead exposure was associated with behavior problems in urban 5- to 7-year-olds. Using a modeling strategy designed to separate direct and indirect effects of

lead, we found that, in 5-year-olds, concurrent blood lead concentration had no direct effect on behavior, and indirect effects were small and inconsistent, although some were statistically significant. Thus, we believe that, if lead exposure is affecting behavior in 5-year-olds, it is doing so mostly through IQ, and direct effects have not emerged or are not measurable with the methods we used. Although the oppositional index in CPRS-R and parent-rated BASC externalizing problem scores were

TABLE 2 Direct and Indirect Effects (95% Confidence Intervals) of 10 $\mu\text{g}/\text{dL}$ Blood Lead Concentration on Behavioral Test Scores at Age 5

Behavioral Tests at Age 5	Blood Lead at Age 2		Blood Lead at Age 5	
	Direct	Indirect	Direct	Indirect
CPRS-R				
Oppositional index	1.19 (−0.75 to 3.13)	0.35 (0.02 to 0.68) ^a	1.18 (−0.84 to 3.20)	0.51 (−0.25 to 1.27)
Hyperactivity index	0.93 (−0.89 to 2.75)	0.34 (0.05 to 0.63) ^a	1.10 (−0.80 to 3.00)	0.50 (−0.83 to 1.83)
ADHD index	0.54 (−1.17 to 2.25)	0.61 (−0.39 to 1.61)	0.54 (−1.22 to 2.30)	0.90 (0.35 to 1.45) ^a
Behavioral index	0.89 (−0.72 to 2.50)	0.44 (−0.46 to 1.34)	0.94 (−0.73 to 2.61)	0.64 (0.23 to 1.05) ^a

Data are adjusted for clinic center, race, gender, language, parent's education, parent's employment, single parent, exact age at blood lead concentration measurement, and caregiver's IQ.

^a $P < .05$.

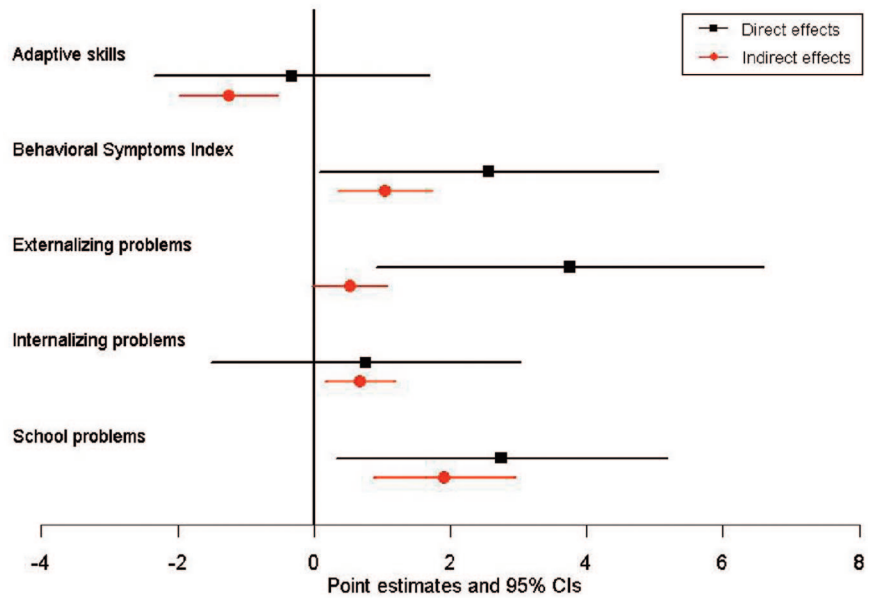


FIGURE 4

Estimates (and 95% confidence intervals) of direct and indirect effects of blood lead concentration at age 7 on the teacher version of the BASC. The values represent the change in behavioral test score per 10 $\mu\text{g}/\text{dL}$ increase in blood lead concentration.

correlated (with correlation coefficient = 0.49), these 2 indices may not capture the same behavioral dimension. In 7-year-olds, there is no effect of blood lead concentration at age 2. However, for the blood lead level at 7 years, there are direct, relatively large effects on the TRS of BASC (behavioral symptoms index, externalizing problems, and school problems); indirect effects on these are smaller (the indirect effect on externalizing problems was only borderline significant). For adaptive skills, the indirect effect is significant. Internalizing problems (excessive anxiety or worry) is the scale with the least effects, with a small but significant indirect effect and a similar but less precisely estimated direct effect. The results from the parent rating scale of the BASC are consistent with teacher report, showing a large direct effect on externalizing problems and a smaller but significant indirect effect on adaptive skills. In general, the results are consistent with a direct effect at age 7 of contemporaneously measured blood lead level on behavior, specifically, conduct and school problems, and an indirect effect through IQ on most other neuropsychological test scores.

The lead and IQ association has long been the focus of investigation for lead effects on the child's nervous system, partly because of the easiness, reliability, and validity of IQ tests and the easy interpretation for both researchers and regulators.^{27,45} Noncognitive effects of lead, on the other hand, are much more complex to study. Furthermore, it has not been the norm in studies that did include behavioral or other measures to tease apart the lead effects on IQ to isolate a direct effect on behavior, even when IQ was measured. The Port Pirie cohort study reported that both externalizing and internalizing behavior problem scores were negatively associated with lead after controlling for child's IQ²⁵; we find relatively large direct effects of lead on externalizing problems and smaller, indirect effects on internalizing problems.

In the studies of lead effects on child IQ, it has long been held that the cross-sectional association between lead and IQ in school-aged children could be the residual effects of peak blood lead concentration at approximately age 2 years.^{1,4,5} Recent analysis of TLC data³⁹ and pooled analysis of 7 international cohort studies,⁸ how-

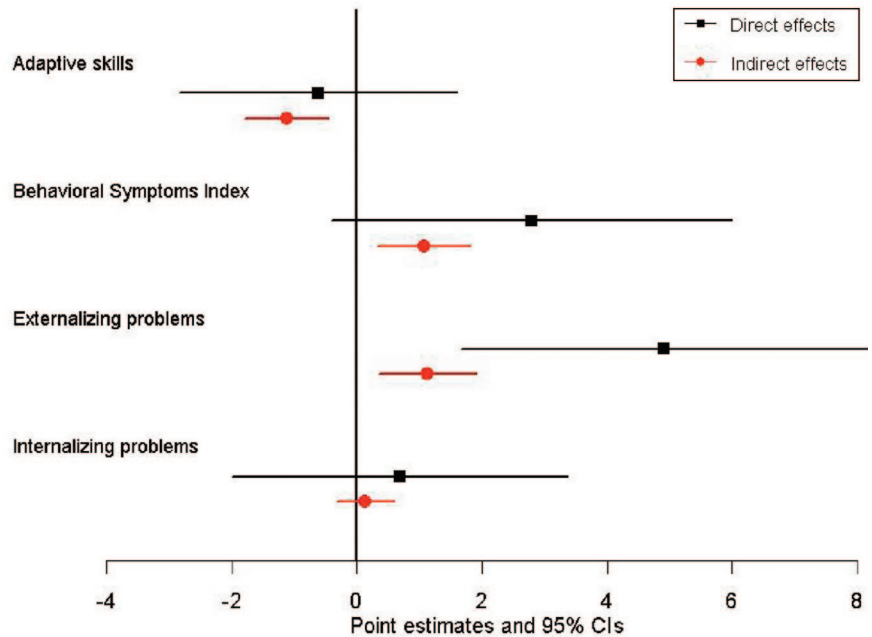


FIGURE 5
Estimates (and 95% confidence intervals) of direct and indirect effects of blood lead concentration at age 7 on the parent version of the BASC. The values represent the change in behavioral test score per 10 $\mu\text{g}/\text{dL}$ increase in blood lead concentration.

TABLE 3 Direct and Indirect Odds Ratio for BASC Scores ≥ 60 per 10 $\mu\text{g}/\text{dL}$ Concurrent Blood Lead Concentration at Age 7, Adjusted for 7-Year IQ

BASC	n	% Score ≥ 60		OR (95% CI) per 10 $\mu\text{g}/\text{dL}$ Concurrent Lead		
		Total	Lead <10 $\mu\text{g}/\text{dL}$	Lead $\geq 10 \mu\text{g}/\text{dL}$	Direct	Indirect
BASC-TRS						
Behavioral symptoms index	518	29	27	35	1.25 (0.90 to 1.73)	1.09 (1.02 to 1.17) ^a
Externalizing problems	517	30	28	34	1.42 (1.03 to 1.97) ^a	1.04 (0.98 to 1.11)
Internalizing problems	519	22	21	24	1.07 (0.76 to 1.52)	1.03 (0.97 to 1.09)
School problems	519	39	33	53	1.39 (1.05 to 1.86) ^a	1.17 (1.07 to 1.28) ^a
BASC-PRS						
Behavioral symptoms index	620	33	29	43	1.52 (1.13, 2.05) ^a	1.07 (1.01 to 1.14) ^a
Externalizing problems	620	38	36	46	1.27 (0.96, 1.68)	1.08 (1.02 to 1.15) ^a
Internalizing problems	620	17	17	19	0.98 (0.69, 1.40)	1.02 (0.96 to 1.07)

Data were adjusted for clinic center, race, gender, language, parent's education, parent's employment, single parent, exact age at blood lead concentration measurement, and caregiver's IQ.

^a $P < .05$.

ever, show that concurrent blood lead concentration has the strongest association with IQ scores. For behavior, such analyses are scarce; Burns et al²⁵ found postnatal lead measures had associations with Child Behavior Checklist total behavior problem scores that were "qualitatively similar" to lifetime average lead exposure in the Port Pirie study. In our study, for both teacher and parent BASC scores, concurrent blood lead level generally had a stronger association than earlier blood lead measures. This is consistent with our previous analysis of the lead and IQ association.³⁹ The results suggest that prevention of lead exposure should continue into later childhood and not cease soon after peak blood lead level begins to fall at approximately age 3.

The biological mechanism of lead effects on cognitive function and neurobehavior has been studied for a long

time. Lead has been found to affect synaptogenesis, postsynaptic *N*-methyl-D-aspartate receptor sensitivity, calcium-mediated events, neurotransmitter dopamine release, and mitochondria activities.⁴⁶⁻⁴⁸ However, the possible pathway of lead effects on behavior is still to be determined.

Our study has the strength of large sample size, long follow-up period, high retention rate of subjects in the follow-up, multiple measurements of behavior, and good quality control in the measurements. The limitations of the study are lack of Home Observation for Measurement of the Environment score, lack of some family and neighborhood characteristics (ie, social stressors), and limited generalizability to the general population because of the high blood lead level at enrollment (mean: 26 $\mu\text{g}/\text{dL}$ in TLC study vs 2 $\mu\text{g}/\text{dL}$ in US chil-

dren). Although it may be that effects of lead on behavior occur only in children with relatively high exposures, such as those in TLC, experience with lead and IQ is not reassuring in that the dose-response curve seems to be at least linear and may be steeper at lower levels of exposure.^{7,8} Still, it would be interesting to see whether the association exists in children with background levels of exposure at approximately age 2 years, because they probably do not have a marked decline of blood lead levels by age 7 years. Nonetheless, in the eastern US cities where TLC was done, poor housing, lead exposure, poverty, and other social stressors are strongly confounded, and so the causal nature of the lead and behavior association cannot be proven absolutely by observational study.

With the regulation of leaded gasoline and paint, the mean blood lead concentration in US children declined remarkably in the past 3 decades. However, the best estimate of the number of children aged 1 to 5 years with blood lead concentration >10 µg/dL in 1999–2002 was 1.6% (~310 000 children).⁴⁹ If lead effects on behavior are independent of its effects on IQ, the adverse effects of lead exposure in children would be larger than currently thought, but the benefits of prevention of lead exposure would also be magnified. Additional studies are needed to study the associations between baseline and concurrent blood lead levels and neuropsychological function and behavior problems among children older than 7 years and into adolescence. How exposure to urban violence or other stressors associated with poverty impact lead-exposed children as they enter adolescence is yet to be determined, although there are now ≥2 studies in which lead exposure in early life is associated with later delinquent behavior.^{14,47}

CONCLUSIONS

We have found, in children with relatively high lead exposure, that concurrent blood lead concentration was associated with externalizing and school problems at 7 years old, and the effect was not entirely mediated through the lead effect on IQ. On the other hand, higher blood lead concentration at 2 years of age was not associated with behavior at 7 years of age. Finding both direct and indirect effects of concurrent blood lead concentration on behavior among school-aged children lends further urgency to the necessity of preventing lead exposure in children, preferably continuing into school age.

ACKNOWLEDGMENTS

The TLC trial was supported by National Institute on Environmental Health Sciences intramural and extramural funds, in cooperation with the National Institutes of Health Office of Minority Health, and by the Centers for Disease Control and Prevention. Succimer and pla-

cebo capsules were gifts from McNeil Labs (Fort Washington, PA).

We thank David Dunson, PhD, at the National Institute of Environmental Health Sciences for helpful comments on an earlier version of the article.

REFERENCES

- Bellinger DC, Stiles KM, Needleman HL. Low-level lead exposure, intelligence and academic achievement: a long-term follow-up study. *Pediatrics*. 1992;90:855–861
- Baghurst PA, McMichael AJ, Wigg NR, et al. Environmental exposure to lead and children's intelligence at the age of seven years. The Port Pirie Cohort Study. *N Engl J Med*. 1992;327:1279–1284
- Dietrich KN, Berger OG, Succop PA, Hammond PB, Bornschein RL. The developmental consequences of low to moderate prenatal and postnatal lead exposure: intellectual attainment in the Cincinnati Lead Study Cohort following school entry. *Neurotoxicol Teratol*. 1993;15:37–44
- Pocock SJ, Smith M, Baghurst P. Environmental lead and children's intelligence: a systematic review of the epidemiological evidence. *BMJ*. 1994;309:1189–1197
- Schwartz J. Low-level lead exposure and children's IQ: a meta-analysis and search for a threshold. *Environ Res*. 1994;65:42–55
- Lanphear BP, Dietrich K, Auinger P, Cox C. Cognitive deficits associated with blood lead concentrations <10 microg/dL in US children and adolescents. *Public Health Rep*. 2000;115:521–529
- Canfield RL, Henderson CR Jr, Cory-Slechta DA, Cox C, Jusko TA, Lanphear BP. Intellectual impairment in children with blood lead concentrations below 10 microg per deciliter. *N Engl J Med*. 2003;348:1517–1526
- Lanphear BP, Hornung R, Khoury J, et al. Low-level environmental lead exposure and children's intellectual function: an international pooled analysis. *Environ Health Perspect*. 2005;113:894–899
- Needleman HL, Gunnoe C, Leviton A, et al. Deficits in psychologic and classroom performance of children with elevated dentine lead levels. *N Engl J Med*. 1979;300:689–695
- Munoz H, Romiew I, Palazuelos E, Mancilla-Sanchez T, Meneses-Gonzalez F, Hernandez-Avila M. Blood lead level and neurobehavioral development among children living in Mexico City. *Arch Environ Health*. 1993;48:132–139
- Leviton A, Bellinger D, Allred EN, Rabinowitz M, Needleman H, Schoenbaum S. Pre- and postnatal low-level lead exposure and children's dysfunction in school. *Environ Res*. 1993;60:30–43
- David OJ, Hoffman SP, Clark J, Grad G, Sverd J. The relationship of hyperactivity to moderately elevated lead levels. *Arch Environ Health*. 1983;38:341–346
- Tuthill RW. Hair lead levels related to children's classroom attention-deficit behavior. *Arch Environ Health*. 1996;51:214–220
- Needleman HL, McFarland C, Ness RB, Fienberg SE, Tobin MJ. Bone lead levels in adjudicated delinquents. A case control study. *Neurotoxicol Teratol*. 2002;24:711–717
- Dietrich KN, Berger OG, Succop PA. Lead exposure and the motor developmental status of urban six-year-old children in the Cincinnati Prospective Study. *Pediatrics*. 1993;91:301–307
- Winneke G, Altmann L, Kramer U, et al. Neurobehavioral and neurophysiological observations in six year old children with low lead levels in East and West Germany. *Neurotoxicology*. 1994;15:705–713
- Altmann L, Sveinsson K, Kramer U, Winneke G, Wiegand H. Assessment of neurophysiologic and neurobehavioral effects of environmental pollutants in 5- and 6-year-old children. *Environ Res*. 1997;73:125–131

18. Benetou-Marantidou A, Nakou S, Micheloyannis J. Neurobehavioral estimation of children with life-long increased lead exposure. *Arch Environ Health*. 1988;43:392–395
19. Sciarillo WG, Alexander G, Farrell KP. Lead exposure and child behavior. *Am J Public Health*. 1992;82:1356–1360
20. Bellinger D, Leviton A, Allred E, Rabinowitz M. Pre- and postnatal lead exposure and behavior problems in school-aged children. *Environ Res*. 1994;66:12–30
21. Needleman HL, Riess JA, Tobin MJ, Biesecker GE, Greenhouse JB. Bone lead levels and delinquent behavior. *JAMA*. 1996; 275:363–369
22. Mendelsohn AL, Dreyer BP, Fierman AH, et al. Low-level lead exposure and behavior in early childhood. *Pediatrics*. 1998; 101(3). Available at: www.pediatrics.org/cgi/content/full/101/3/e10
23. Counter SA, Buchanan LH, Rosas HD, Ortega F. Neurocognitive effects of chronic lead intoxication in Andean children. *J Neurol Sci*. 1998;160:47–53
24. Wasserman GA, Staghezza-Jaramillo B, ShROUT P, Popovac D, Graziano J. The effect of lead exposure on behavior problems in preschool children. *Am J Public Health*. 1998;88:481–486
25. Burns JM, Baghurst PA, Sawyer MG, McMichael AJ, Tong SL. Lifetime low-level exposure to environmental lead and children's emotional and behavioral development at ages 11–13 years. The Port Pirie Cohort Study. *Am J Epidemiol*. 1999;149: 740–749
26. Goodman R, Simonoff E, Stevenson J. The impact of child IQ, parent IQ and sibling IQ on child behavioural deviance scores. *J Child Psychol Psychiatry*. 1995;36:409–425
27. Walkowiak J, Altmann L, Kramer U, et al. Cognitive and sensorimotor functions in 6-year-old children in relation to lead and mercury levels: adjustment for intelligence and contrast sensitivity in computerized testing. *Neurotoxicol Teratol*. 1998;20:511–521
28. TLC. The Treatment of Lead-Exposed Children (TLC) Trial: design and recruitment for a study of the effect of oral chelation on growth and development in toddlers. *Paediatr Perinat Epidemiol*. 1998;12:313–333
29. Rogan WJ, Dietrich KN, Ware JH, et al. The effect of chelation therapy with succimer on neuropsychological development in children exposed to lead. *N Engl J Med*. 2001;344:1421–1426
30. Dietrich KN, Ware JH, Salganik M, et al. Effect of chelation therapy on the neuropsychological and behavioral development of lead-exposed children after school entry. *Pediatrics*. 2004;114:19–26
31. Miller DT, Paschal DC, Gunter EW, Stroud PE, D'Angelo J. Determination of lead in blood using electrothermal atomisation atomic absorption spectrometry with a L'vov platform and matrix modifier. *Analyst*. 1987;112:1701–1704
32. Wechsler D. *The Wechsler Preschool and Primary Scales of Intelligence-Revised*. San Antonio, TX: The Psychological Corporation; 1989
33. Wechsler D. *Wechsler Intelligence Scale for Children-III*. San Antonio, TX: The Psychological Corporation; 1991
34. Wechsler D. *Wechsler Adult Intelligence Scale, Revised*. San Antonio, TX: The Psychological Corporation; 1981
35. Silverstein AB. Two- and four-subtest short forms of the WAIS-R: a closer look at validity and reliability. *J Clin Psychol*. 1985;41:95–97
36. Conners CK. *Conners' Rating Scales: Technical Manual, Revised*. North Tonawanda, NY: Multi-Health Systems; 1997
37. Reynolds CR, Kamphaus RW. *Behavior Assessment System for Children*. Circle Pines, MN: American Guidance Service; 1992
38. Chiodo LM, Jacobson SW, Jacobson JL. Neurodevelopmental effects of postnatal lead exposure at very low levels. *Neurotoxicol Teratol*. 2004;26:359–371
39. Chen A, Dietrich KN, Ware JH, Radcliffe J, Rogan WJ. IQ and blood lead from 2 to 7 years of age: are the effects in older children the residual of high blood lead concentrations in 2-year-olds? *Environ Health Perspect*. 2005;113:597–601
40. Bollen KA. *Structural Equations With Latent Variables*. New York, NY: John Wiley; 1989
41. Bollen KA, Stine R. Direct and indirect effects: classical and bootstrap estimates of variability. *Sociol Methodol*. 1990;20: 115–140
42. Jöreskog KG, Sörbom D. *LISREL 8 User's Guide*. Uppsala, Sweden: Scientific Software International; 1996
43. Sobel ME. Asymptotic Confidence Intervals for Indirect Effects in Structural Equation Models. In: Leinhardt S, ed. *Sociological Methodology*. San Francisco, CA: Jossey-Bass; 1982:290–312
44. Muthén LK, Muthén BO. *Mplus User's Guide*. Release 3.5. Los Angeles, CA: Muthén & Muthén; 2004
45. Bellinger DC. Lead. *Pediatrics*. 2004;113:1016–1022
46. Banks EC, Ferretti LE, Shucard DW. Effects of low level lead exposure on cognitive function in children: a review of behavioral, neuropsychological and biological evidence. *Neurotoxicology*. 1997;18:237–281
47. Dietrich KN, Ris MD, Succop PA, Berger OG, Bornschein RL. Early exposure to lead and juvenile delinquency. *Neurotoxicol Teratol*. 2001;23:511–518
48. Brockel BJ, Cory-Slechta DA. Lead-induced decrements in waiting behavior: involvement of D2-like dopamine receptors. *Pharmacol Biochem Behav*. 1999;63:423–434
49. Centers for Disease Control and Prevention. Blood lead levels - United States, 1999–2002. *MMWR Morb Mortal Wkly Rep*. 2005; 54:513–516

Lead Exposure, IQ, and Behavior in Urban 5- to 7-Year-Olds: Does Lead Affect Behavior Only by Lowering IQ?

Aimin Chen, Bo Cai, Kim N. Dietrich, Jerilynn Radcliffe and Walter J. Rogan

Pediatrics 2007;119:e650-e658

DOI: 10.1542/peds.2006-1973

**Updated Information
& Services**

including high-resolution figures, can be found at:
<http://www.pediatrics.org/cgi/content/full/119/3/e650>

References

This article cites 39 articles, 13 of which you can access for free at:
<http://www.pediatrics.org/cgi/content/full/119/3/e650#BIBL>

Subspecialty Collections

This article, along with others on similar topics, appears in the following collection(s):
Therapeutics & Toxicology
http://www.pediatrics.org/cgi/collection/therapeutics_and_toxicology

Permissions & Licensing

Information about reproducing this article in parts (figures, tables) or in its entirety can be found online at:
<http://www.pediatrics.org/misc/Permissions.shtml>

Reprints

Information about ordering reprints can be found online:
<http://www.pediatrics.org/misc/reprints.shtml>

American Academy of Pediatrics

DEDICATED TO THE HEALTH OF ALL CHILDREN™

